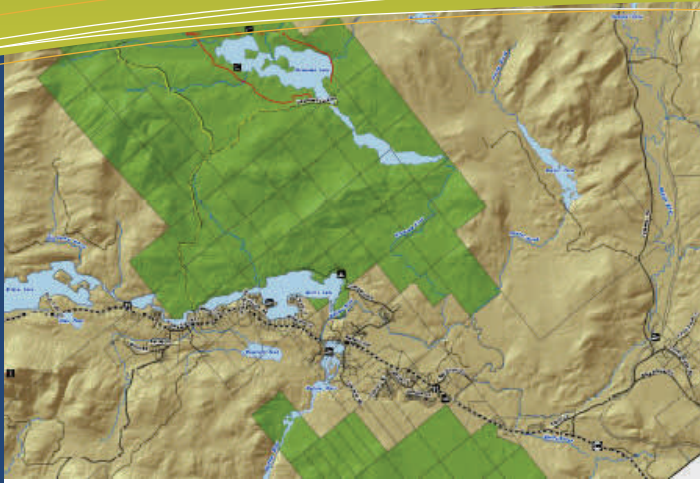


Building A Community Vision

One of the most important aspects of developing a comprehensive plan is creating a shared community vision. Through community surveys, public workshops, and stakeholder interviews, *the Newcomb Comprehensive Plan Committee seeks to include all members of the community.*

IT'S THE LAW...

Did you know that New York State Law considers the adoption of a comprehensive plan "among the most important powers and duties granted by the legislature to a town government?" As such, New York State law requires that a town's land use regulations "must be in accordance" with its comprehensive plan. Newcomb, one of the few towns in the Adirondack Park that has Adirondack Park Agency (APA) approved land use regulations, is a regional leader in protecting and preserving its natural resources and quality of life.



This Issue

Comprehensive Planning Process

Community Survey

Upcoming Events

The Newcomb Comprehensive Planning Process

Recently, the Town of Newcomb began the process of updating its Comprehensive Plan. Originally adopted in 1977, then updated in 1990, Newcomb's Comprehensive Plan has helped guide land use, preservation and economic development decisions for over 30 years. This current update will be a year long effort. A Comprehensive Plan Committee, appointed by the Town Board, has been tasked with developing the plan.

The process of updating the Comprehensive Plan will include the following steps:

- Inventory & Analysis
- Development Suitability Analysis
- Build-Out Study
- Public Participation Process
- Issues & Opportunities Identification
- Goals & Objectives Identification
- Develop Implementation Strategy
- Develop & Publish the Comprehensive Plan

The Newcomb Comprehensive Plan update will be based on a thorough study and analysis of existing trends and conditions, infrastructure, current census and economic data, community services and facilities, historical and cultural resources, natural resources, and land use characteristics.

The Committee's objective is to create a Comprehensive Plan that reflects the goals and aspirations of the community, while preserving and protecting critical resources and the quality of life for Newcomb's future generations.

Community Survey Announcement!

Public participation is essential to the planning process. In order to capture issues, concerns, and ideas from as many members of the community as possible, the Newcomb Comprehensive Plan Committee will be sending a Community Survey to all property owners at the end of March. The Survey will focus on a wide variety of issues and topics that will help guide the comprehensive planning process. The Committee asks that you please return your completed survey in order for your voice to be heard!

**Keep an eye out
for the Community
Survey!**

Upcoming Events

- **Comprehensive Plan Committee Meetings**

The Comprehensive Plan Committee meets the 3rd Thursday of each month at the Newcomb Town Hall. The public is invited to attend these regularly scheduled meetings.

- **Community Survey**

The Comprehensive Planning Committee is developing a community survey that will be mailed to all of Newcomb's residents and homeowners at the end of March. The goal of the survey is to capture issues, concerns, and ideas from as many members of the community as possible and to provide continued opportunity for public participation throughout the planning process.

- **Public Meeting.**

A public meeting will be held once the community survey is complete. The meeting has been scheduled for June 18, at 7:00 pm at the Newcomb Central School. The Comprehensive Planning Committee will present the survey's findings along with other information of interest obtained during the comprehensive planning process.

Your Participation Counts!

A community's comprehensive plan, in order to be effective, must represent all constituencies. As such, public participation is crucial part to the comprehensive planning process. **SO TAKE PART AND LET YOUR VOICE BE HEARD!**

Newcomb Issue 01 February 2009

THE
Chazen
COMPANIES®

100 Glen Street
Glens Falls, NY 12801
T: 518.812.0513
F: 518.812.2205
glensfalls@chazencompanies.com